



# WEST MANOR ELEMENTARY SCHOOL

Weekly Construction Progress Report  
Week 11/16/20-11/20/20



**Balfour Beatty**

## Current Activities 11/16/20-11/20/20

- Continued rebar/concrete at gymnasium addition footings.
- Started rebar and formwork at gym retaining walls
- Interior plumbing underground inspected and prepped for concrete.
- Continued MEP overhead rough at SW wing of renovation.
- Continued in-wall MEP rough at Renovation.
- Crane mobilized to demo existing HVAC rooftop equipment.

## Upcoming Activities 11/23/20-11/27/20

- Continue gym addition footing.
- Start placement of concrete at gym retaining wall.
- Place concrete at admin addition and interior slab on grade pour-backs.
- Continuing MEPF overhead rough-in at SW Wing.
- Continuing in-wall MEP rough at Renovation.
- Continuing selective exterior wall demo and lintels to be delivered
- Complete access road to lower gym area.



Reinforcing & Forming Walls at Gym Area



Crane Mobilized to Demo Existing HVAC Rooftop Equipment

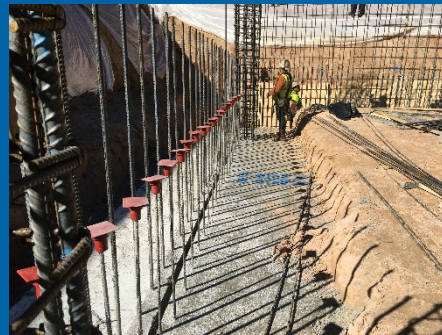
## Activities



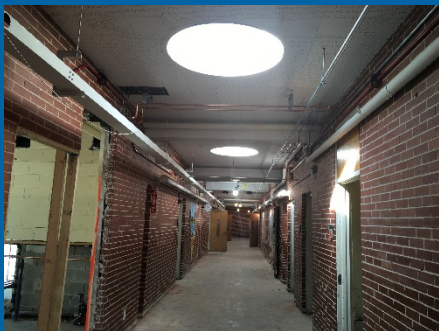
Stockpiling Soils from  
Excavation of Storm System



Rebar & Formwork at Gym  
Retaining Walls



Footings Poured at Gym



OH Rough at SW Wing Corridors



OH Rough at SW Wing  
Classrooms



Installing GAB for Additional  
Parking and Laydown Areas

## Project Schedule

- Schedule Status: On Schedule



## Project Financials

- Construction GMP: \$11,000,000
- Progress Billed to Date: \$979,014.23
- Budget Status: Within GMP

